

# EndoBenchXT2™



Now improved, the  
EndoBenchXT2 verifies  
endoscope image quality  
with greater performance,  
control and accuracy.



With new product features  
and enhanced software, the  
EndobenchXT2 allows even greater  
capability for medical and service  
professionals to verify  
endoscope quality.



**Lighthouse Imaging**

Because precision is everything

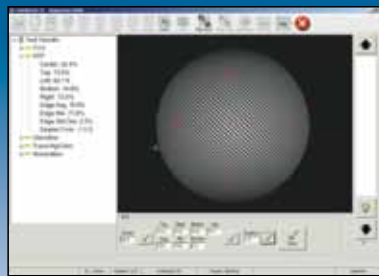
[LighthouseOptics.com](http://LighthouseOptics.com)



Sets up measurements quickly with included high resolution targets and precision positioner.



Adjusts endoscope direction-of-view and field-of-view easily and accurately.



Measures and documents endoscope image quality automatically.



High output external light source.

## EndoBenchXT2™

EndoBenchXT2 is a portable endoscope image quality test system for medical equipment QC testing, suitable for hospital and service repair environments. Using custom designed opto-mechanical system and software, the EndoBenchXT2 evaluates and reports the parameters that are central to a clinical environment. Adapters and fixtures enable the measurement of a wide range of rigid, flexible and video endoscopes.

### Enhanced features for greater ability to verify scope quality

- Extended direction of view measurement range
- Improved data interface
- 25% higher output external light source with improved control
- Up-to-date system software and high performance CPU
- MTF weighted average
- Ability to rotate the data collection axis
- Save and load setup information
- Optional extended measurement range for very bright scopes

### We set a higher standard

Lighthouse Imaging Corporation is a leading provider of optical engineering and design services for the medical device industry.

We are an ISO 13485:2003 and ISO 9001:2008 certified, FDA registered medical device manufacturer specializing in minimally invasive surgical applications.

Learn more about us at [LighthouseOptics.com](http://LighthouseOptics.com).

### Specifications

**Diameters:** 2 -16mm

**Lengths:** 160-470mm

**Angles of view:** 50°-140° field of view,  
-5°-80° direction of view

#### Endoscope types that can be tested:

- Rigid endoscopes (laparoscopes, arthroscopes, etc.)
- flexible fiberoptic endoscopes
- video endoscopes (with VCR/NTSC output)

#### Available measurements:

- Field of View (FOV)
- Direction of View (DOV)
- Apparent field of View (AFOV)
- MTF (image sharpness)
- Distortion
- Transmission
- Vignetting
- Coloration (TVC)
- eyepiece diopter error
- fiber optic illumination brightness and distribution

Learn more  
from your  
smartphone



**Lighthouse Imaging**

Because precision is everything

477 Congress St. • Portland, Maine 04101 • Ph. 207.253.5350 • Fax 207.253.5603 • [info@lighthouseoptics.com](mailto:info@lighthouseoptics.com)

[LighthouseOptics.com](http://LighthouseOptics.com)

